



Maxwell
CONTRACT

DESIGN GUIDE

SPRING 2024

HOSPITALITY

HEALTHCARE

CONTRACT

800-663-1159 EXT 6 | maxwellfabrics.com

TABLE OF CONTENTS

COMPANY OVERVIEW	3
SPRING 2024 OVERVIEW	3
PERFORMANCE CUT VELVETS	4
TELAFINA XVI	5
CURRENT PATTERNS BY COLLECTION	6
HIGH PERFORMANCE UPHOLSTERY	
VELVET	
FAUX LEATHER	
SEARCH BY CATEGORY	
IMPORTANT LINKS	
CURRENT PATTERNS BY COLLECTION CONTINUED	7
DRAPERY	
WIDE-WIDTH SHEERS	
INDOOR/OUTDOOR	
1838 WALLCOVERINGS	
CONTACT US	
LET US BE YOUR DESIGN ASSISTANT	8





PERFORMANCE DRIVEN

WHY CHOOSE MAXWELL FABRICS?

The guiding principle of our development process is that good design is not simply about visually-pleasing aesthetics; it must be accessible, functional & perform in real life. Performance means so much more than high double rubs. The Maxwell commitment to performance begins with service & extends to the technical & aesthetic elements of our products. Maxwell Fabrics works with innovative suppliers & technologies to ensure that our textiles & wallcoverings bring a residential hand and styling to the realm of performance-driven contract design.

The Spring introduction is influenced by ideas of craft & composition, reflected in the season's tagline: Dell'Arte. We are introducing two new contract-suitable books with a focus on high-end style, intense color & plush textures.

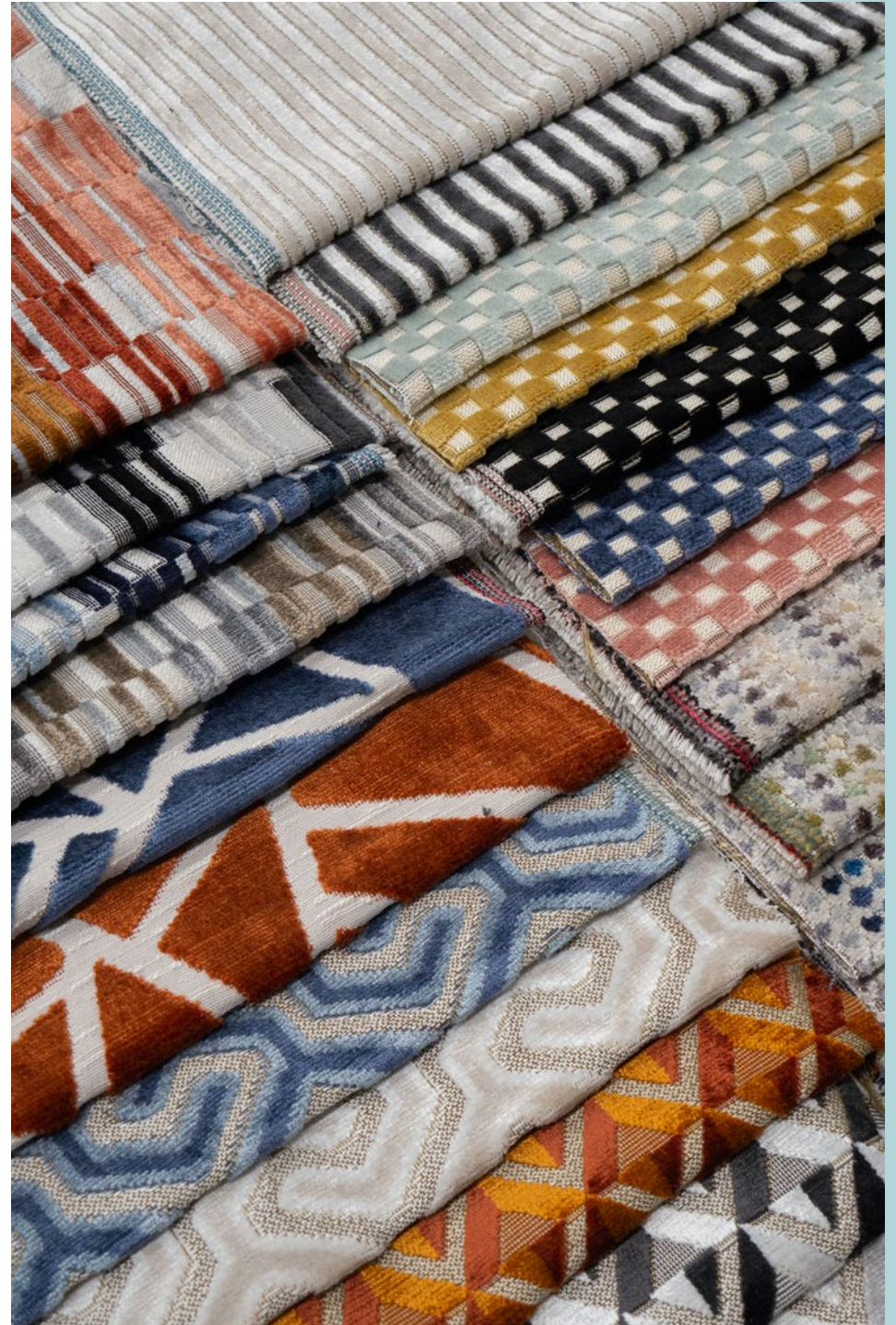
SPRING 2024 COLLECTION

PERFORMANCE CUT VELVETS

Performance Cut Velvets combines the luxury & natural durability of Belgian velvet with ALTA cleanable technology. This decorative group of patterns is perfect for boutique hospitality settings with abrasion ratings of 50,000 double rubs & over. The design story & palette, including pattern names, are inspired by the elegance of Northern Italian mountain towns, featuring trend colors of caper, rust, cobalt & radicchio alongside classic gold & modern black & white combinations.

Standout patterns include Tirano, inspired by the mid-century Italian architect Gio Ponti & his playful reimagining of traditional ceramic tiles; Bolzano is a luxe & timeless take on the ubiquitous checkerboard pattern trend; Trento is a mid-scale shatterglass pattern; Trieste is an abstract geometric look with a multicolor layout reminiscent of tangram puzzles.

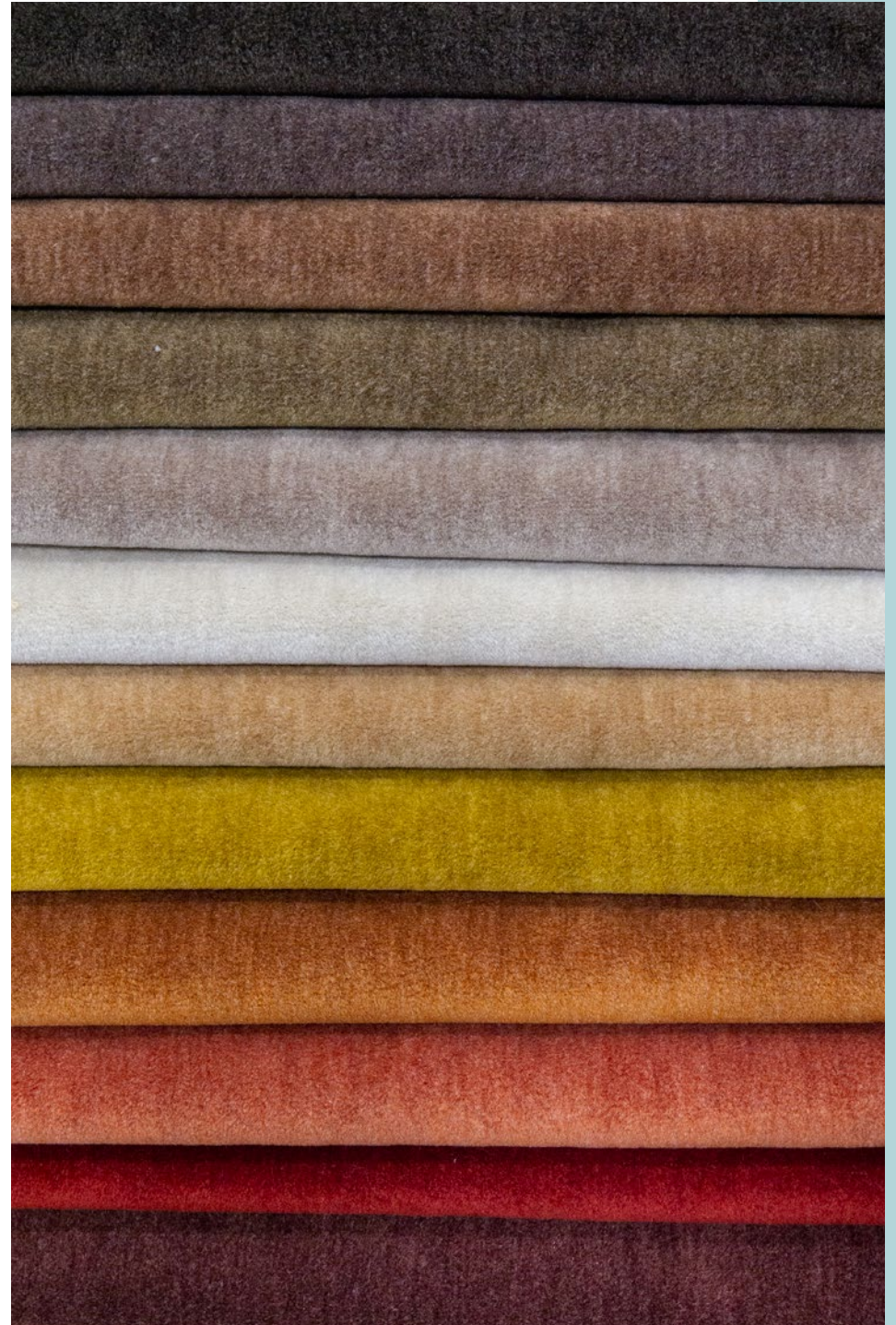
- 11 patterns (Bolzano, Brossa, Cavareno, Garola, Lecco, Lugano, Mirren, Tirano, Trento, Trieste, Vinovo)
- 48 skus (42 exclusive)
- All styles are stocked with ALTA permanent soil & stain resistance
- Suitable for residential & contract upholstery
- All patterns pass 50K double rubs Wyzenbeek
- All patterns pass NFPA 260 Class I & CAL 117-2013
- All patterns are compliant with CAL AB-2998
- Cleanable following ALTA cleaning instructions



TELAFINA XVI

Our Telafina line is dedicated to building a seasonless capsule of must-have luxury constructions with a focus on natural fiber content. Telafina XVI continues that category with Belluno, a sumptuous mohair blend available in 26 rich colorways like blood orange, sequoia, basil & Prussian blue with nuanced neutrals of camel, bronze & rootbeer. Mohair velvet is a naturally robust construction & exceeds 150,000 double rubs.

- 26 skus (exclusive colors)
- 50% mohair, 50% acrylic
- Suitable for residential & contract upholstery
- Passes 150K double rubs Wyzenbeek
- Passes NFPA 260 Class I & Cal 117-2013
- Compliant with CAL AB-2998



CURRENT PATTERNS BY COLLECTIONS

Click the collection titles to browse patterns

HIGH PERFORMANCE UPHOLSTERY

Classic Chenilles Performance
Colorguard - Amazonia
Colorguard - Mosaic
Colorguard - Nectar
Colorguard - Nougat
Colorguard - Pashmina
Contract Performance Textures
Curled Up V Performance
Curled Up VI Performance
Curled Up VII Performance
Curled Up VIII Performance
Menswear - Plaids & Checks
Natural Ease Performance Jacquards
Performance Textures II
Performance Wovens VOL. III - Stoneware
Performance Wovens VOL. III - Palm Beach
Performance Wovens VOL. IV - Boudoir
Performance Wovens VOL. IV - North Sea
Performance Wovens VOL. IV - Smokeshow
Performance Wovens VOL. V - Silver Sun
Performance Wovens VOL. V - Badlands
Performance Wovens VOL. V - Paintbrush
Performance Wovens VOL. VI - Pampas
Performance Wovens VOL. VI - Peachtree

VELVET

Classic Velvets
Glam Velvets
Performance Velvets VOL. I
Performance Velvets VOL. II
Performance Velvets VOL. III
Performance Velvets VOL. IV
Velvet Room
Performance Cut Velvets

FAUX LEATHER

Easy Rider IV
Easy Rider V
Easy Rider VI
Easy Rider VII
Easy Rider VIII
Jackson

SEARCH BY CATEGORY

Blackout
CAN ULC S109 Drapery & Sheers
Faux Leather
Indoor/Outdoor
NFPA 701 Drapery & Sheers
Velvet

IMPORTANT LINKS

Blog
Contract Products
Resources

CURRENT PATTERNS BY COLLECTIONS

Click the collection titles to browse patterns

DRAPERY

Blackout
Blackout II
Pure & Simple VI - Satin
Pure & Simple VII - Raw Silk Looks
Pure & Simple IX - Casements
Pure & Simple XII- Faux Silks
Regency
Wide Width Drapery (Erst, Hofman, Marcel & Richter)

WIDE-WIDTH SHEERS

Sheer Craft
Sheer Textures
Sheer Basics
Sheer Heights
Sheer Styles
Super Wide Sheers
Sheer Threads
Sheer Paths

INDOOR/OUTDOOR

Home & Garden ACT VI
Home & Garden ACT VII
Home & Garden ACT VIII
Home & Garden ACT IX
Performance Wovens VOL VI - Pampas
Performance Wovens VOL. VI - Peachtree

1838 WALLCOVERINGS

V&A Decorative Papers II
V&A Decorative Papers
Essence
Pavilion
Willow
Elodie
Aurora
Camellia
Rosemore
Avington

LET US BE YOUR Design Assistant™

Our dedicated in-house design assistant team are unrivaled in the industry. Consider our design assistants your style concierge. If the look you envision for your project is not in our line, our design assistants will work to source or create the perfect textile through our trusted suppliers.



TALK TO THE EXPERTS

Let us assist you by:

- Saving you time
- Offering technical knowledge and suggesting substitutes
- Providing solutions for budgets and lead times
- Stock checking and availability
- Priority sample shipping upon request

CONTACT US

EMAIL

contract@maxwellfabrics.com
contractsourcing@maxwellfabrics.com

PHONE

800-663-1159 ext. 1

WEBSITE

maxwellfabrics.com/designassistant

Maxwell