



Maxwell
CONTRACT

DESIGN GUIDE

SPRING 2022

HOSPITALITY HEALTHCARE CONTRACT

800-663-1159 EXT 6 | maxwellfabrics.com

TABLE OF CONTENTS

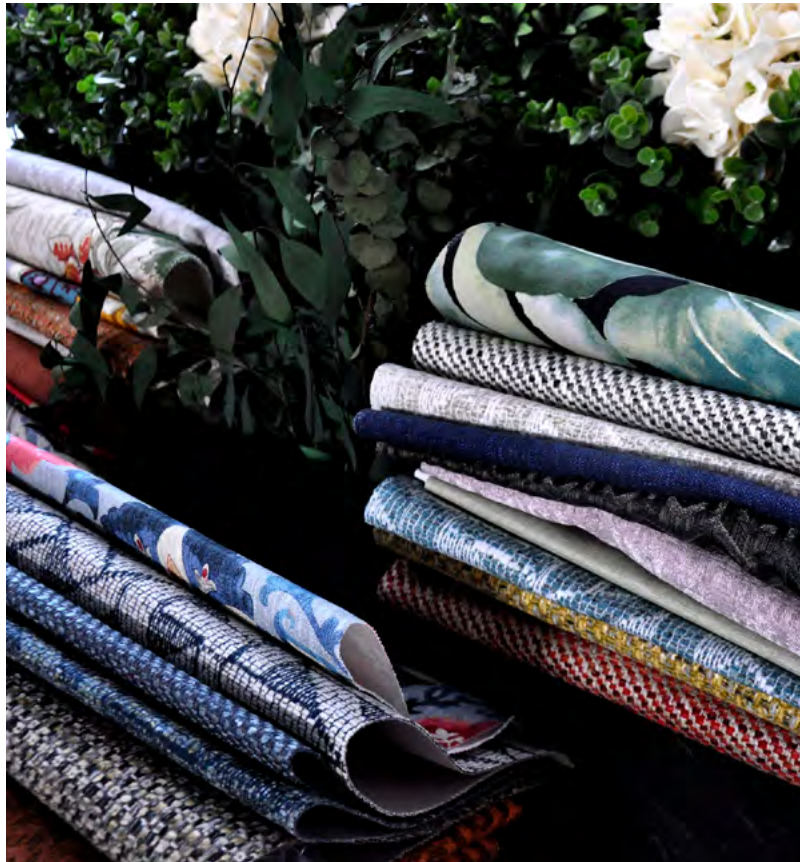
| | |
|--|----------|
| <u>COMPANY OVERVIEW</u> | <u>3</u> |
| <u> SPRING 2022 OVERVIEW</u> | <u>3</u> |
| <u>BLACKOUT II</u> | <u>4</u> |
| <u>COLORGUARD</u> | <u>5</u> |
| <u> MOSAIC</u> | <u>5</u> |
| <u> PASHMINA</u> | <u>5</u> |
| <u>PERFORMANCE TEXTURES II</u> | <u>6</u> |
| <u>FIBREGUARD & FIBREGUARD PRO</u> | <u>7</u> |
| <u>SHEER BASICS</u> | <u>8</u> |

| | |
|--|-----------|
| <u>CURRENT PATTERNS BY COLLECTION</u> | <u>9</u> |
| <u> HIGH PERFORMANCE UPHOLSTERY</u> | <u>9</u> |
| <u> ESSENTIALS</u> | <u>9</u> |
| <u> VELVET</u> | <u>9</u> |
| <u> FAUX LEATHER</u> | <u>9</u> |
| <u> INDOOR/OUTDOOR</u> | <u>9</u> |
| <u>CURRENT PATTERNS BY COLLECTION CONTINUED...</u> | <u>10</u> |
| <u> DRAPERY</u> | <u>10</u> |
| <u> WIDE-WIDTH SHEERS</u> | <u>10</u> |
| <u> 1838 WALLCOVERINGS</u> | <u>10</u> |
| <u> SEARCH BY CATEGORY</u> | <u>10</u> |
| <u> IMPORTANT LINKS</u> | <u>10</u> |
| <u>CONTACT US</u> | <u>11</u> |
| <u> LET US BE YOUR DESIGN ASSISTANT</u> | <u>11</u> |

PERFORMANCE DRIVEN

WHY CHOOSE MAXWELL FABRICS?

The guiding principle of our development process is that good design is not simply about visually-pleasing aesthetics; it must be accessible, functional & perform in real life. Performance means so much more than high double rubs. The Maxwell commitment to performance begins with service & extends to the technical & aesthetic elements of our products. Maxwell Fabrics works with innovative suppliers & technologies to ensure that our textiles & wallcoverings bring residential hand styling to the realm of performance-driven contract design.



SPRING 2022 COLLECTION

This season, we were inspired by the romantic imagery of a lush and moody garden by moonlight. With **Midnight Garden**, we explore brilliant hues and floral motifs contrasted with cool and contemporary staples. Click [here](#) to watch our collection video, presented by Design Director, Zoë Anderson.

AT THE WINDOW:

We expand on a core category, wide-width sheers, by introducing four clean & simple NFPA 701/CAN ULC S109 batiste & voile constructions merchandised into a go-to book, **Sheer Basics**. Additionally, we follow up our first 3-pass blackout book with **Blackout II**, including two new textures.

PERFORMANCE UPHOLSTERY:

Our **FibreGuard-by-color** category, **ColorGuard**, gets an update with two new books, **Mosaic** & **Pashmina**. All styles are stocked with **FibreGuard** for cleanability or **FibreGuard Pro** for moisture barrier. This decorative compilation is supported by the durable, foundational upholstery qualities of **Performance Textures II**.

HOSPITALITY

HEALTHCARE

CONTRACT

800-663-1159 EXT 6 | maxwellfabrics.com



BLACKOUT II - 3 PASS BLACKOUT

Blackout II is the next instalment in our **3 pass blackout series**, with a light-blocking layer built right into the construction. These three clean, modern drapery textures are **100% blackout**, and pass **NFPA 701** and **CAN ULC S109**.

- 3 patterns (Ersa – Galileo – Orion)
- 48 skus
- Suitable for residential & contract drapery
- 55" wide
- All patterns pass NFPA 701 & CAN ULC/S109
- 100% polyester face with 3-pass 100% acrylic blackout backing
- Passes Oeko-Tex standard – environmentally safe & free of harmful substances
- All patterns are washable
- Includes 5 rebooked colorways of pattern Ersa (Almond – Charcoal – Elephant – Marshmallow – Mist)

HOSPITALITY HEALTHCARE CONTRACT

800-663-1159 EXT 6 | maxwellfabrics.com

COLORGUARD

is Maxwell's Fibreguard-by-color category. Exclusive designs coordinate & complement a range of small-scale patterns, textures & solids, styled over two performance color books. All styles are stocked with either FibreGuard or Fibreguard Pro.

Performance upholstery constructions pass ACT (Association for Contract Textiles) Performance Guidelines for Woven Upholstery Fabrics - High Traffic/ Public Spaces



Mosaic's color story reflects the vibrant hues of Spanish gardens, with pomegranate, cypress, & aqua.

Pashmina showcases neutrals from egret to black pepper, drawing inspiration from the incredible range of wool tones found in nature.

Standout patterns include **Barrio**, a modern take on a trellis design rendered in chic faux wool; **Alameda**, a subtle allover watermark-effect chenille; **Bendito**, a multi-color horizontal strie with chunky bouclé yarns; and **Camino**, a modified Greek key with a matte/shine contrast in the construction.

- 2 color books (Mosaic – Pashmina)
- 8 exclusive patterns (Alameda – Barrio – Bendito – Camino – Ferran – Marconi – Ramon – Salamanca)
- 129 skus
- 74 skus stocked with FibreGuard
- 55 skus stocked with FibreGuard Pro (moisture barrier technology – anti-microbial, mildew & odor resistant)
- Suitable for residential & contract upholstery
- Passes 35 – 100K double rubs Wyzenbeek
- All patterns meet or exceed ACT standards for woven upholstery fabrics for abrasion, flammability, wet & dry crocking (dye transfer), colorfastness to light (resistance to the fading effect of light), pilling, breaking strength & seam slippage
- All patterns pass NFPA 260 CLASS I (UFAC) & CAL 117-2013
- All patterns are compliant with CAL AB-2998
- Passes Oeko-Tex standard – environmentally safe & free of harmful substances
- All patterns are washable

HOSPITALITY HEALTHCARE CONTRACT

800-663-1159 EXT 6 | maxwellfabrics.com

PERFORMANCE TEXTURES II

Following up on the success of Performance Textures, the second instalment introduces another round of must-have FibreGuard textures with a focus on natural, neutral tones & shades of denim blue.

- 13 exclusive patterns (Ajax – Castor – Gonzalo – Lennox – Nemo – Neruda – Nestor – Nori – Oberon – Prospero – Provost – Rugby – Swift)
- 48 skus
- Stocked with FibreGuard
- Suitable for residential & contract upholstery
- Passes 30 – 100K double rubs Wyzenbeek
- All patterns meet or exceed ACT standards for woven upholstery fabrics for abrasion, flammability, wet & dry crocking (dye transfer), colorfastness to light (resistance to the fading effect of light), pilling, breaking strength & seam slippage
- All patterns pass NFPA 260 CLASS I (UFAC) & CAL 117-2013
- All patterns are compliant with CAL AB-2998
- Passes Oeko-Tex standard – environmentally safe & free of harmful substances
- All patterns are washable



HOSPITALITY HEALTHCARE CONTRACT

800-663-1159 EXT 6 | maxwellfabrics.com

The fabrics in the ColorGuard and Performance Textures collection have been treated with FibreGuard or FibreGuard Pro which builds permanent stain release properties into the fiber structure to make cleaning easy. Since the protection is built into every fiber it will last the life of the fabric.

General Spot Cleaning Instructions for FibreGuard:

1. Remove any remaining stain residue with a teaspoon.
2. Apply water to the stain and blot using a white paper towel (do not rub in a circular motion). Repeat the process until the stain residue is no longer visible on the paper towel.
3. Apply more water to the area (for stubborn stains, a normal household bar of soap may be necessary) and gently rub with a microfiber cloth. Use circular movements for best results. Repeat the process until completely removed (when using soap, use intermittently).
4. Allow the fabric to dry naturally. Do not apply heat.

FibreGuard Cleaning Instructions & Recommended Cleaning Products:
www.maxwellfabrics.com/resources



HOSPITALITY HEALTHCARE CONTRACT

800-663-1159 EXT 6 | maxwellfabrics.com



SHEER BASICS

We built upon our sheer hanger capsule collection from the fall by adding new colorways to batiste & voile constructions **Lumos** and **Leviosa** as well introducing two new qualities, **Diagon** and **Glisseo**, all shown together as a go-to stack book.

- 4 exclusive plains (Diagon – Glisseo – Leviosa – Lumos)
- 47 skus
- Suitable for residential & contract drapery
- 118" – 126" wide
- All patterns shown railroded
- All patterns pass NFPA 701 & CAN ULC/S109
- 100% polyester
- Passes Oeko-Tex standard – environmentally safe & free of harmful substances
- All patterns are washable

HOSPITALITY HEALTHCARE CONTRACT

800-663-1159 EXT 6 | maxwellfabrics.com

CURRENT PATTERNS BY COLLECTION

CLICK THE COLLECTION TITLES TO BROWSE PATTERNS

HIGH PERFORMANCE UPHOLSTERY

stocked with cleanable technology

CLASSIC CHENILLES PERFORMANCE

COLORGUARD - AMAZONIA

COLORGUARD - MOSAIC

COLORGUARD - NECTAR

COLORGUARD - NOUGAT

COLORGUARD - PASHMINA

CONTRACT PERFORMANCE TEXTURES

CURLED UP V PERFORMANCE

CURLED UP VI PERFORMANCE

CURLED UP VII PERFORMANCE

MENSWEAR - PLAIDS & CHECKS

NATURAL EASE PERFORMANCE JACQUARDS

PERFORMANCE TEXTURES II

PERFORMANCE WOENS VOL. I - ADOBE

PERFORMANCE WOENS VOL. I - DEEP SEA

PERFORMANCE WOENS VOL. I - THUNDER

PERFORMANCE WOENS VOL. I - WHITE SAND

PERFORMANCE WOENS VOL. II - AL FRESCO

PERFORMANCE WOENS VOL. II - CANYON

PERFORMANCE WOENS VOL. II - DRAGONFRUIT

PERFORMANCE WOENS VOL. II - SHADOW & LIGHT

PERFORMANCE WOENS VOL. III - STONWARE

PERFORMANCE WOENS VOL. III - PALM BEACH

PERFORMANCE WOENS VOL. IV - BOUDOIR

PERFORMANCE WOENS VOL. IV - NORTH SEA

PERFORMANCE WOENS VOL. IV - SMOKESHOW

PERFORMANCE WOENS VOL. V - SILVER SUN

PERFORMANCE WOENS VOL. V - BADLANDS

PERFORMANCE WOENS VOL. V - PAINTBRUSH

ESSENTIALS

competitively-priced volume basics

UPHOLSTERY ESSENTIALS - TEXTURES I - MENSWEAR

UPHOLSTERY ESSENTIALS - TEXTURES II - CASUAL CHENILLE

UPHOLSTERY ESSENTIALS - TEXTURES III - MICROFIBER

UPHOLSTERY ESSENTIALS - TEXTURES IV - WOVEN LOOKS

UPHOLSTERY ESSENTIALS - TEXTURES V - WEAVE EFFECTS

VELVET

CLASSIC VELVETS

GLAM VELVET

PERFORMANCE VELVETS VOL. I

PERFORMANCE VELVETS VOL. II

PERFORMANCE VELVETS VOL. III

VELVET ROOM

FAUX LEATHER

EASY RIDER III

EASY RIDER IV

EASY RIDER V

EASY RIDER VI

EASY RIDER VII

FLEXA SILICONE

JACKSON

INDOOR/OUTDOOR

HOME & GARDEN ACT IV

HOME & GARDEN ACT V

HOSPITALITY

HEALTHCARE

CONTRACT

800-663-1159 EXT 6 | maxwellfabrics.com

CURRENT PATTERNS BY COLLECTION

CLICK THE COLLECTION TITLES TO BROWSE PATTERNS

DRAPERY

BLACKOUT
BLACKOUT II
PURE & SIMPLE IV – FAUX SILKS
PURE & SIMPLE VI – SATIN
PURE & SIMPLE VII – RAW SILK LOOK
PURE & SIMPLE IX – CASEMENTS
PURE & SIMPLE XII – FAUX SILKS
REGENCY
WIDE WIDTH DRAPERY (ERNST, HOFMAN, MARCEL & RICHTER)

WIDE-WIDTH SHEERS

SHEER BASICS
SHEER HEIGHTS
SHEER STYLE
SUPER WIDE SHEERS
SHEER THREADS

1838 WALLCOVERINGS

ESSENCE
PAVILION
WILLOW
ELODIE
MURALS
CAPRI
AURORA
CAMELLIA
ROSEMORE
AVINGTON

SEARCH BY CATEGORY

BLACKOUT
CAN ULC S109 DRAPERY & SHEERS
FAUX LEATHER
INDOOR/OUTDOOR
NFPA 701 DRAPERY & SHEERS
VELVET

IMPORTANT LINKS

BLOG
CONTRACT PRODUCTS
RESOURCES



HOSPITALITY HEALTHCARE CONTRACT

800-663-1159 EXT 6 | maxwellfabrics.com

CONTACT US

TALK TO THE EXPERTS

Our dedicated contract team provide tailored support for your projects. Offering services customized to your specific needs from sourcing and sample requests to project quotations, pricing and shipping deadlines.

EMAIL

contract@maxwellfabrics.com

PHONE

800-663-1159 ext. 6

WEBSITE

maxwellfabrics.com

Maxwell

LET US BE YOUR Design Assistant™

Our dedicated in-house design assistant team are unrivaled in the industry. Consider our design assistants your style concierge. If the look you envision for your project is not in our line, our design assistants will work to source or create the perfect textile through our trusted suppliers.



EMAIL

contractsourcing@maxwellfabrics.com

PHONE

800-663-1159 ext. 6

maxwellfabrics.com/designassistant