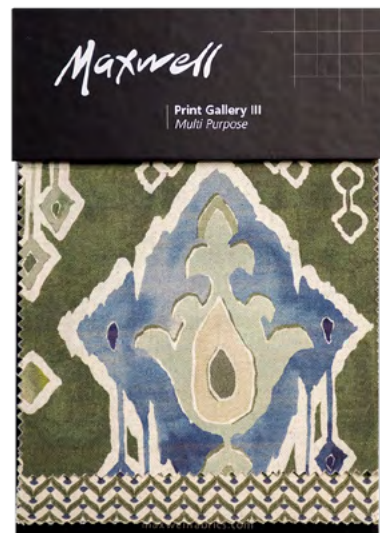




Villa Reverie

SUMMER 2025

SUMMER 2025



Print Gallery III



Stripes & Checks III



Performance
Wovens Vol VIII
Honeycomb



Performance
Wovens Vol VIII
Lakeside



Performance
Wovens Vol VIII
Quarry



PRINT GALLERY III

Print Gallery III is a destination book for natural-blend, large-scale prints. Inspired by traditional block printing, it features fresh, colorful takes on classic patterns with hand-drawn florals and decorative motifs. The warm, earthy palette draws from natural pigments and celebrates the heritage of traditional printing.

Maxwell



STRIPES & CHECKS III

Stripes & Checks III is a relaxed and contemporary book that highlights timeless cotton-blend stripe designs. With a mix of scales, textures, and patterns, the book brings together both classic and on-trend woven fabrics.

Maxwell







PERFORMANCE WOVENS VOL VIII

Performance Wovens Vol. VIII is a high-performance upholstery collection for residential and contract use. Featuring coordinating patterns, textures, and solids, each fabric offers built-in, long-lasting stain and spill protection through advanced technologies like ALTA, Crypton Home, MAXGUARD, and InsideOut.

Maxwell



HONEYCOMB



A warm and inviting palette blending classic neutrals like Camel and Cedar with sunbaked shades of Canyon and Clay. Pops of Apricot, Persimmon, and Cherry add brightness, while earthy tones like Amber, Copper, and Garnet bring depth.



LAKESIDE



A fresh and calming range of blues and greens, from soft Spa and Sky to deeper Lagoon and Night Sky. Trend-forward greens like Sage, Lime, and Spruce give the palette a modern, organic feel.



QUARRY



A versatile mix of warm and cool neutrals. Striking black-and-white tones like Domino and Raven pair with rich browns like Fawn and Espresso, balanced by soft, layerable shades like Wheat, Fog, and Truffle.

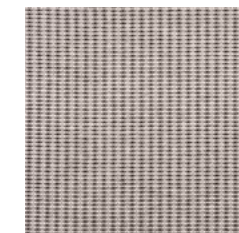




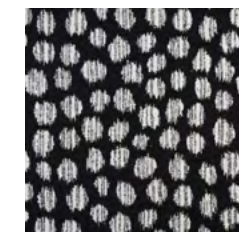
BLACK TIE



- 1. LORIMER # 701 Domino**
Performance Wovens
Vol. VIII Quarry



- 2. DOBBIN # 729 Quarry**
Performance Wovens
Vol. VIII Quarry



- 3. HOOPER # 701 Raven**
Performance Wovens
Vol. VIII Quarry



- 4. BIBURY # 633 Charcoal**
Stripes & Checks III



- 5. GRANGER # 732 Birch**
Easy Rider VIII

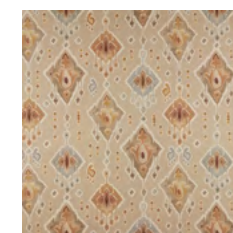


- 6. SANDRO # 104 Winter**
Wide Width Basics II

Click the pattern icon or name to view it on our website



COSTA BRAVA



1. SUMBA # 516 Terracota
Print Gallery III



2. MEEKER # 822 Caramel
Performance Wovens
Vol. VIII *Honeycomb*



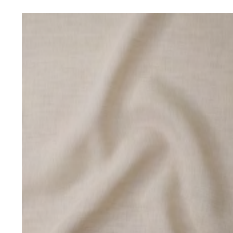
3. BANKER # 821 Chestnut
Performance Wovens
Vol. VIII *Honeycomb*



4. PIMLICO # 605 Butterscotch
Color Theory Act VII
Sandalwood



5. TARO # 211 Biscut
Easy Rider VI



6. SYLVIA # 207 Blonde
Sheer Glam

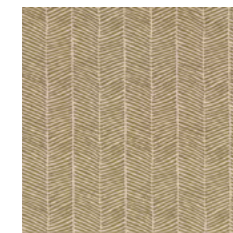
Click the pattern icon or name to view it on our website



LAVA STONE



1. TILLARY # 722 Sepia
Performance Wovens
Vol. VIII *Quarry*



2. SURREY # 532 Brass
Print Gallery III



3. BAKER # 721 Truffle
Performance Wovens
Vol. VIII *Quarry*



4. CHANTERELLE # 605 Cremini
Color Theory Vol. VIII *Tigerseye*



5. Lyle # 771 Cocoa
Easy Rider VIII

Click the pattern icon or name to view it on our website



LUCKY PENNY



1. STRATTON # 518 Bronze
Print Gallery III



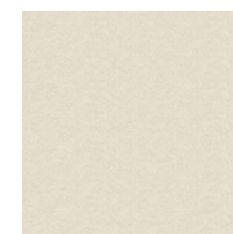
2. COMBE # 628 Sand
Stripes & Checks III



3. MONTROSE # 824 Clay
Performance Wovens
Vol. VIII *Honeycomb*



4. TRAILRIDER # 101 Cedar
Trailrider



5. DEAN # 917 Cream
Performance Wovens
Vol. VIII *Lakeside*



6. JULEP # 405 Natural
Sheer Threads

Click the pattern icon or name to view it on our website



HALF MOON BAY



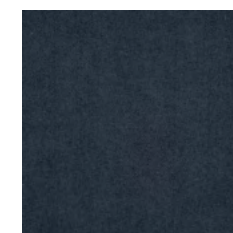
1. EDITH # 560 Lagoon
Print Gallery III



2. JASMINE # 510 Oregano
Print Gallery III



3. BIBURY # 626 Toast
Stripes & Checks III



4. BANKER # 928 Night Sky
Performance Wovens
Vol. VIII *Lakeside*



5. TARO # 215 Thyme
Easy Rider VI



6. HAKATA # 540 Linen
Sheer Craft

Click the pattern icon or name to view it on our website



SHORELINE



1. BIRCH # 563 Teal
Print Gallery III



2. SURREY # 564 Aqua
Print Gallery IIII



3. KENT # 913 Aqua
Performance Wovens
Vol. VIII *Lakeside*



4. EMERSON # 910 Tide
Performance Wovens
Vol. VIII *Lakeside*



5. LUXOR # 780 Laurel
Easy Rider VIII



6. APERITIVO # 408 Straw
Sheer Threads

Click the pattern icon or name to view it on our website



BOARDWALK BLUES



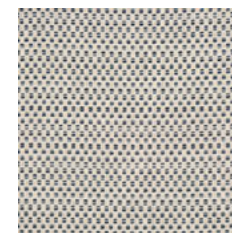
1. KODI # 559 Blue
Print Gallery III



2. COMBE # 604 Indigo
Stripes & Checks III



3. FAWKES # 734 Oyster
Easy Rider VIII



4. RUSSEL # 927 Royal
Performance Wovens
Vol. VIII *Lakeside*



5. HOYT # 905 Harbor
Performance Wovens
Vol. VIII *Lakeside* Wovens



6. OTHELLO # 634 Vermicelli
Sheer Textures

Click the pattern icon or name to view it on our website

TOURMALINE



1. STRATTON # 507 Ivy
Print Gallery III



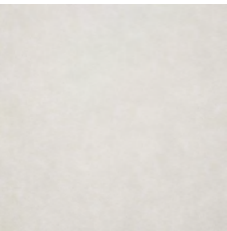
2. COSTWOLD # 615 Pine
Stripes & Checks III



3. POPLAR # 712 Vanilla
Performance Wovens
Vol. VIII *Quarry*



4. AINSLIE # 946 Ivy
Performance Wovens
Vol. VIII *Lakeside*



5. TARO # 210 Macadamia
Easy Rider VI



6. TEXADA # 602 Pebble
Color Theory Act VII
Sandalwood

Click the pattern icon or name to view it on our website

LET US BE YOUR Design AssistantTM

Our dedicated in-house design assistant team are unrivaled in the industry. Consider our design assistants your style concierge. If the look you envision for your project is not in our line, our design assistants will work to source or create the perfect textile through our trusted suppliers.



TALK TO THE EXPERTS

Let us assist you by:

- Saving you time
- Offering technical knowledge and suggesting substitutes
- Providing solutions for budgets and lead times
- Stock checking and availability
- Priority sample shipping upon request

CONTACT US

EMAIL

designassistant@maxwellfabrics.com

PHONE

800-663-1159 ext. 1

WEBSITE

maxwellfabrics.com/designassistant

Maxwell